



Set in the ever popular Kennett Court lies this chain free, ground floor, one bedroom retirement apartment. The 15' lounge boasts patio doors leading you out to the well kept communal gardens, with a good sized bedroom, separate kitchen and wet room. Kennett court offers parking, a communal lounge, communal laundry room and communal gardens. A short walk to Swanley Town Centre makes this a great location. A viewing here is highly recommended to truly appreciate what is on offer.



Oakleigh Close
Swanley, BR8 7WP

Guide Price £140,000

Communal Hall

Entrance Hall

Hardwood entrance door, carpeted, coved ceiling, entrance phone, large built in airing cupboard.

Bathroom 6' 10" x 5' 7" (2.08m x 1.70m)

Extractor fan, coved ceiling, vinyl floor, tiled walls, electric towel rail, hand wash basin with cupboard underneath, panelled bath with shower and mixer taps, low level WC, Dimplex wall heater.

Bedroom 12' 6" x 8' 11" (3.81m x 2.72m)

Double glazed window to the side, carpeted, coved ceiling, fitted wardrobes

Lounge 15' 6" x 10' 3" (4.72m x 3.12m)

Double glazed door with double glazed window to the side, leading to communal gardens, carpeted, storage heater, coved ceiling.

Kitchen 5' 8" x 7' 4" (1.73m x 2.23m)

coved ceiling, vinyl floor, Dimplex extractor fan, single draining sink unit with mixer tap, range of wall and base units, built in oven and hob and extractor fan.

Communal garden

Laid lawn. Patio area.

Parking

Managers office

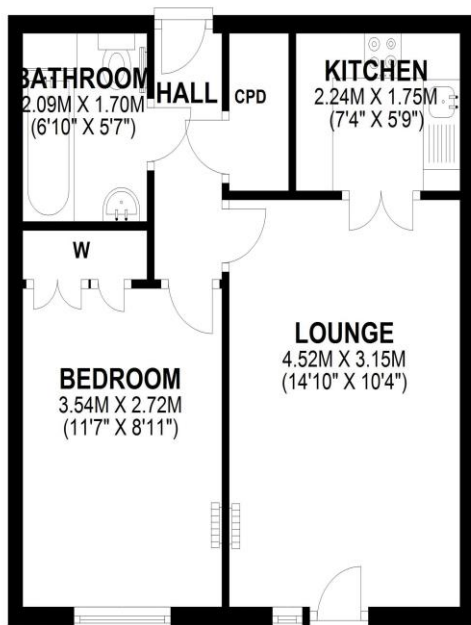
Communal Lounge

Laundry room

Guest room



GROUND FLOOR
APPROX. 38.0 SQ. METRES (409.5 SQ. FEET)



TOTAL AREA: APPROX. 38.0 SQ. METRES (409.5 SQ. FEET)

Viewers notes...

EPC Rating: C
Council Tax Band: C

Whilst we endeavour to make our sales particulars accurate and reliable, if there is any point which is of particular importance to you, please contact the office and we will be pleased to check the information. Do so particularly if travelling some distance. The mention of any appliances and/or services in these details does not imply that these are in full and efficient working order. Please be advised that some of the particulars may be awaiting vendor approval. Please contact the branch who can provide confirmation if required.